

# Genesis

## Light-Steel Structural Projects



Build with the Global  
Green Building Experts



# A Turnkey Approach to Green Building Structures



With more than 10 years of experience and 500 projects erected internationally, Genesis has leading technical and execution expertise in the structural light-steel framing (LSF) industry. This unique know-how in LSF products and technologies is continuously transferred to and kept current within the Genesis' expanding network of licensees and solution providers. Starting from the architectural drawings all the way to inspecting the finished structure, Genesis and its global partners deliver customized or complete turnkey solutions to cost-conscious real estate developers and construction companies eager to join the Green Building movement.

**Structural Engineering Services:** our dedicated team of professional structural engineers, framing designers and technologists bring the experience and the specialized skills required to engage in any type of structural and non-structural projects using LSF products according to local building codes and requirements.

**Manufacturing Services:** state-of-the-art and lean industrial operations located around the world with advanced material handling, cold roll forming, automated framing and sheathing assembly equipment produce on-demand accurate and consistent LSF joist, wall, truss and floor systems in a 100% quality controlled environment.

**Logistics Services:** a live (web-based) and just-in-time management of product inventories on-site and off-site gives instantaneous access to status of any roof, floor, and wall systems pre-fabricated and pre-bundled in sequence for installation of a specific project.

**Installation Services:** experienced and efficient site crews, supervisors and professional engineers are committed and available to ensure the structure gets erected and inspected on-time and with the highest quality standards so all trades' expectations are met.

**Project management Services:** dedicated resources to each project manage continuously all the services described above to ensure all the customer deliverables are met within the agreed budget at all times. Our professional project managers are the focal points from the onset of any project including the contractual phase so communication is transparent and effective during the complete project.

## Structural Light-Steel Systems Benefits



### Social and Health

- ▶ No harmful emission, corrosion or mold
- ▶ Non-combustible and non-organic
- ▶ Lightning-proof
- ▶ Safe for seismic, wind, and snow heavy loads
- ▶ Vapor control and thermal performance



### Environmental

- ▶ Environmentally responsible material
  - Long life cycle
  - Infinite recyclability
  - Limited waste (1 to 10 ratio compared to lumber)
- ▶ Superior energy efficiency
- ▶ Aligned with government initiatives (LEED)



### Business

- ▶ Faster deliveries
  - Turnkey integration efficiencies
  - Reduced delays from weather
  - No multi-trade/supply coordination
  - Panels pre-assembled in factory
  - Safe, clean and accessible jobsites
- ▶ Better Quality
  - Controlled workmanship and consistent dimensions
  - High strength and durable product (protective coating)
  - Longer spans, increased design flexibility
  - No shrinking, warping and cracking
  - Termite and carpenter ant proof
  - Wide range of architectural and finishing options
- ▶ Cost Effective
  - Off-site manufacturing accuracy and predictability
  - Low skill requirement for structure assembly and finish
  - Reduced after sales service, call backs and repairs
  - Low maintenance costs and high resale value
  - Steel commodity readily available and competitive
  - Waste disposal, clean-up, and removal reduced
  - Low contractor's risk insurance costs
  - Light stress on foundations, cranes, and contractors
  - Limited material stock for suppliers and contractors
  - One-stop accountability resulting in on-time and on-budget deliveries

Effective and Seamless  
Project Integration

# Project Management



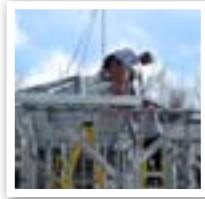
1

Engineering Design and Fabrication  
Drawings for all Structural Elements



2

Wall / Floor / Roof Systems  
Production & Delivery



3

On-site Installation



4

Final Inspection



A Proven and Cost Effective Process

More Than 500  
Commercial,  
Institutional, and  
Residential Projects  
of up to 8 Storeys



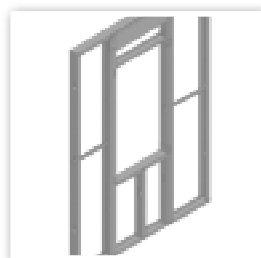


# A Comprehensive Portfolio of Engineered Structural Systems

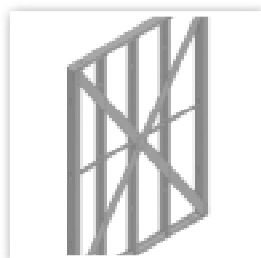
Thanks to their unique and wide capabilities, Genesis and its partners can engineer, manufacture and deliver a building structure for any residential, commercial and institutional building project and can consequently achieve any design architecture with the desired comfort for the occupants. The innovative and smart Genesis Green Systems provide a complete realm of solutions for floor, roof and wall applications meeting or exceeding specifications for fire, sound and thermal ratings.



## Structural & Partition Wall Systems



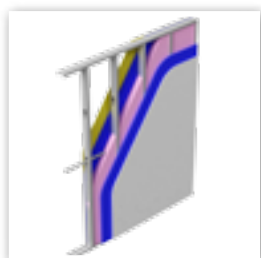
Curtain Walls



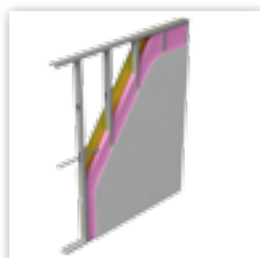
Shear Walls



Non-Load Bearing Walls



Sound Proof Walls

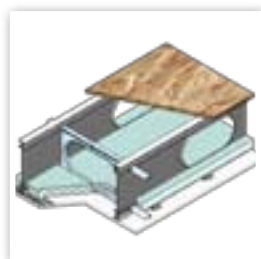


Insulated Walls

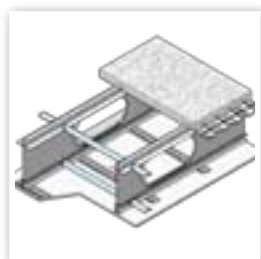
## Structural Floor Systems



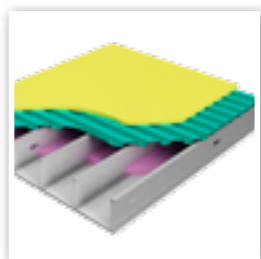
iSPAN Joist System



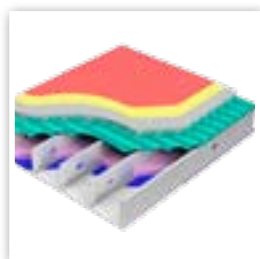
iSPAN Joist System Fire Rated



iSPAN Joist System Composite

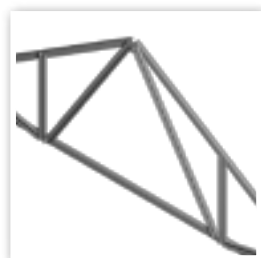


Fire Rated Floor Panels

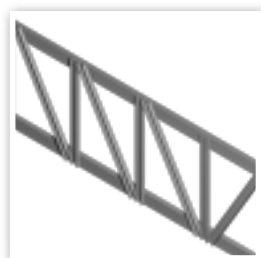


Sound Rated Floor Panels

## Structural Roof Systems



Common Truss



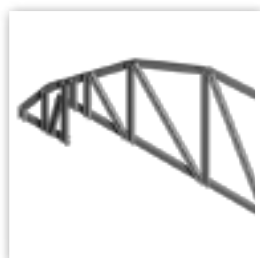
Parallel Chord Trusses



Scissor Trusses



Jack/Mansard Truss



Complex Trusses

# Unbeatable Delivery Schedule

Genesis Green Systems are continuously improved based on a philosophy of on-going innovation, and a clear focus on using the most site-friendly methods of construction. Smart product features are embedded in the systems not only to provide an enhanced assembly experience to all trades but also to accelerate the erection of any building up to 8-storey high. The accuracy and quality of the products combined with a perfect logistic coordination yield into unbeatable delivery schedules, exceeding any traditional construction expectations.



**Panels Arrive**



**Installation Commences**



**Assembly Continues**



**Engineering Inspects & Signs-off**



**Structural Project Completed**





# Pre-Insulated Systems Ready for Finishing

Light steel structures provides full flexibility in terms of building envelope giving Genesis' customers the advantage to get the panelized systems insulated and finished on site. Genesis Green Systems offer a variety of pre-engineered options for sound, thermal and fire insulation combined with finish fascias so the occupant's comfort and exterior preferences can be met.

## Sheathing Products



OSB



Plywood



Densglass™



Drywall / Concrete Board

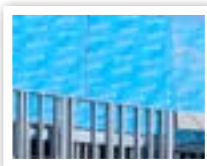
## Insulation Products



EPS Insulation



XPS Insulation

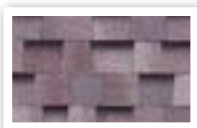


Blueskin



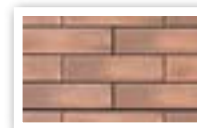
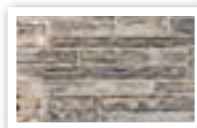
Fiberglass Insulation

## Roof Finish Options\*



	Substrate/Sheathing Options	Finish Options
<b>Slope Roofs</b>	OSB	Asphalt shingles Cedar Shake Standing Seam/Metal/Copper Clay/Slate/Concrete Tiles
	Plywood	
	Structural Insulated Panel (SIP)	
	Metal Deck	
<b>Flat Roofs</b>	OSB	Asphalt Mopped Felt System Green Roof Ballast EPDM/PVC/TPO/CSPE Cool Roof (white acrylic)
	Plywood	
	Structural Insulated Panel (SIP)	
	Metal Deck	
	EPS/EPDM built-up rubber membrane	
	Standing Seam	
<b>Floors</b>	OSB	Carpet Ceramic Tiles / Marble Traditional Hardwood / Bamboo Engineered Wood / Laminate VCT Polished Concrete
	Plywood	
	Metal Deck & Concrete	
	Metal Deck	
<b>Walls</b>	Rigid	Brick EIFS Siding Stucco Hardi Plank Siding
	OSB or Plywood or Bamboo	
	Densglass	

## Wall Finish Options\*



\*Sample finish options only.

# Build a Wide Range of Projects using Genesis Structural Solutions

## Commercial Framing



Restaurants



Shopping Centers



Motels, Hotels & Resorts

## Institutional Framing



Schools & Day-Care Centers



Health Care Facilities



Senior Care Facilities

## Portable Framing



Modular Residential/Pods



School Portable



Mobile Homes/ Trailers

## Residential Framing



Custom Estate Homes



Single Family Homes



Semi-Detached Homes



Multi-Family Townhomes



Condominiums



Apartments



# Genesis Global Network of Partners



## Contact Us

Genesis continuously transfers the world leading structural solutions, technologies and expertise to its fast expanding network of partners. Starting from the architectural drawings all the way to inspecting the finished LSF structure, Genesis and its partners deliver complete turnkey solutions to cost-conscious real estate developers and construction companies eager to join the Green Building revolution.

For more information, please contact us at:

[www.genesisworldwide.com](http://www.genesisworldwide.com)

- ▶ Email: [info@genesisworldwide.com](mailto:info@genesisworldwide.com)
- ▶ Toll Free (North America): +1.866.311.3711
- ▶ Phone: +1 (905) 879.9000

10877 Keele Street, Bldg. B  
Vaughan, Ontario L6A 0K6 Canada



<http://www.genesisworldwide.com/projects/>



This document has been published for the purpose of providing information of a general nature only. Further, no guarantee, warranty, or any other form of assurance is given as to the accuracy, currency or completeness of the information provided. Accordingly, any reliance on, or use, by you of any information contained within this document for any purpose whatsoever shall be entirely at your own risk, and any liability to you is expressly disclaimed to the maximum extent permitted by law.

All Logos are trademarks of Genesis Worldwide Inc.

Copyright® 2009 Genesis Worldwide Inc. Reproduction of any part of this document is prohibited, except with the prior written consent of Genesis Worldwide Inc.